

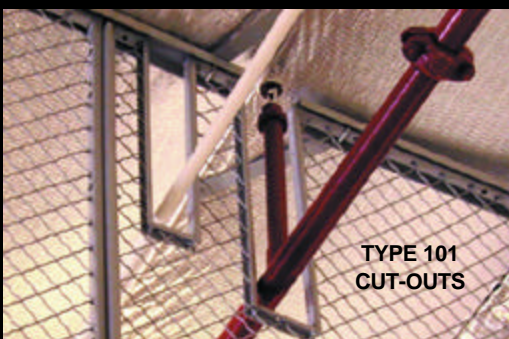
Cal Wire

"Wire Mesh Specialists Since 1948"

10605 / CAL
BuyLine 2080

California Wire Products has been manufacturing wire mesh partitions, handrail infill panels, and in-plant offices since 1948. Cal Wire engineers have developed one of the most effective modular systems available for all of your security requirements. From our Standard 101 panels to unique custom designs Cal Wire promises the highest quality product, knowledgeable support, and personalized service to our customers.

STANDARD PANELS



CUSTOM DESIGNS

CALIFORNIA WIRE PRODUCTS CORPORATION
1-888-564-WIRE

CAL WIRE Type 101 Construction Woven Wire Partitions

BENEFITS OF CAL WIRE WOVEN WIRE MESH:

Security

Heavy duty 10 gauge woven wire construction protects your valuable assets and inventory. Keyed mortise type locks are standard on all 101 gates except headerless gates.

Flexibility

Modular panel construction allows for quick and simple installation. Future layout changes are easy with Cal Wire's modular design.

Toughness

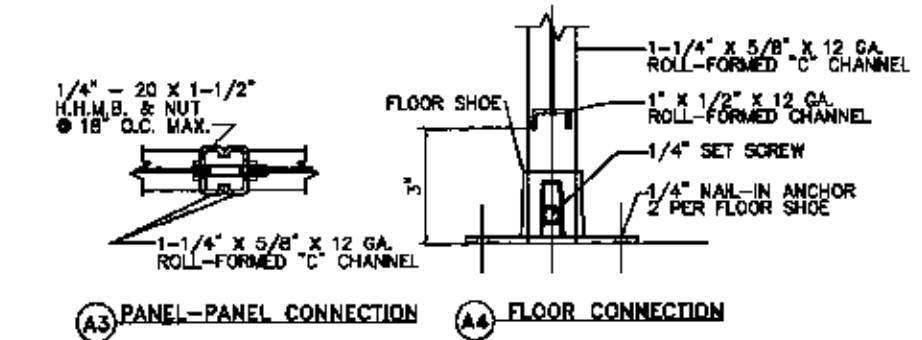
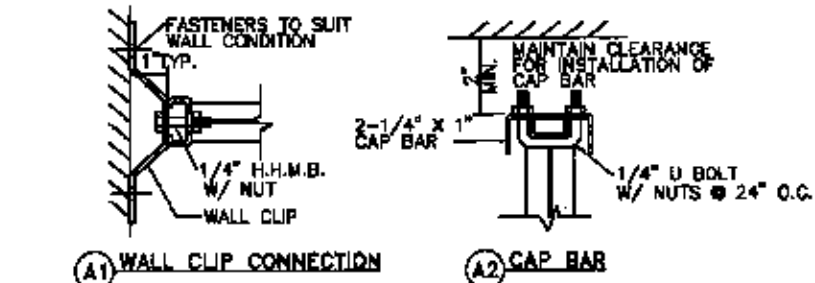
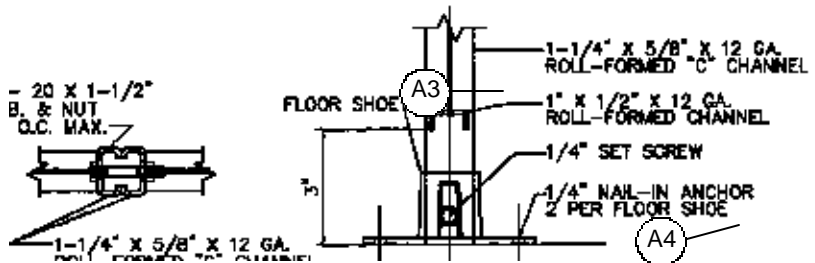
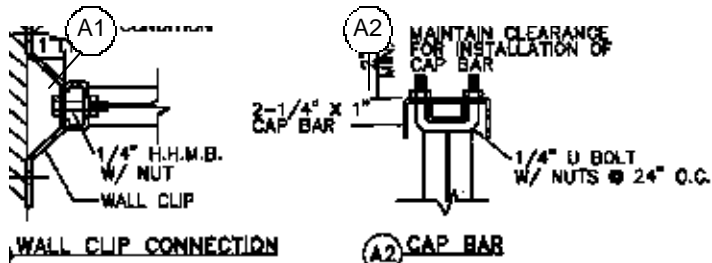
All wires are securely clinched or welded to heavy duty 12 gauge roll formed channel frames. Woven design allows for maximum impact resistance.

Efficiency

Open wall design provides visual security, while utilizing existing lighting, sprinklers, and HVAC.

Selector Guide / Specifications

1. Wire: #10 W&M gauge steel wire 1-1/2" diamond mesh, clinched to channel frames.
2. Vertical Frames: 1-1/4" X 5/8" roll formed 12 gauge "C" shaped channel, specially formed to prevent telescoping, and provided with holes for bolting to adjacent panel.
3. Horizontal Frames: 1" x 1/2" roll formed 12 gauge channel using mortise and tenon construction for extra strength.
4. Center Stiffeners: (2) 1" X 1/2" roll formed 12 gauge channels riveted and welded for greater strength and rigidity.
5. Top Capping Bar: 2-1/4" X 1" roll formed 12 gauge channel with 1/4" "U" bolts 24" o.c.
6. Floor Shoes: Aluminum 2" high with set screw adjustment.
7. Corner Posts: 1-1/4" X 1-1/4" x 1/8" 90° angle.
8. All hardware and anchors are furnished for a complete installation.

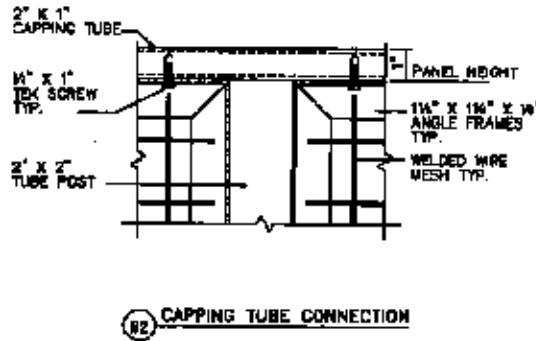
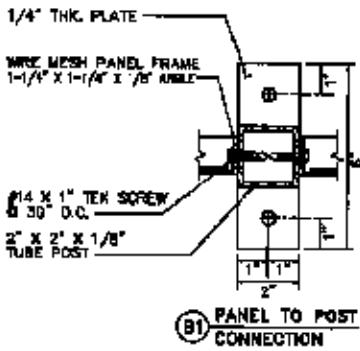
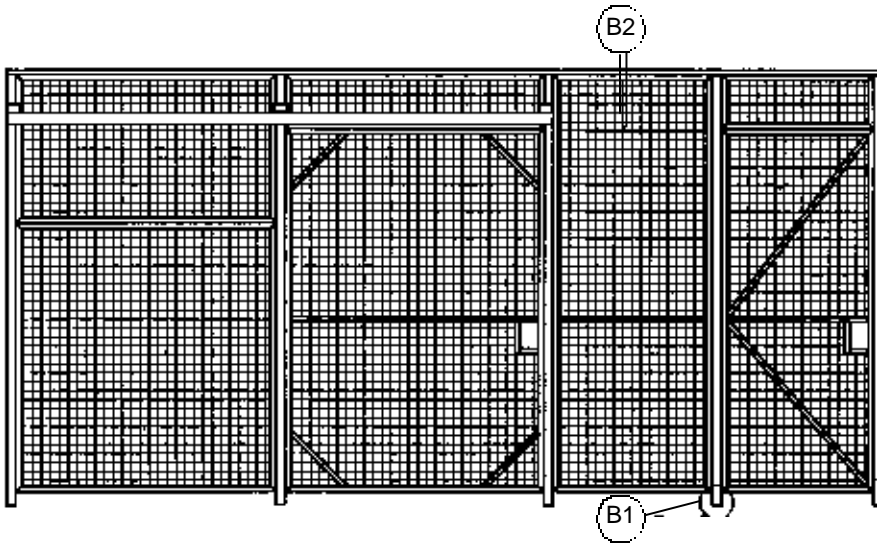


CAL WIRE Type 333 Construction Heavy Duty Woven Wire Partitions

Selector Guide / Specifications

1. Wire: #6 W&M gauge steel wire 2" diamond mesh clinched and welded to channel frames.
2. Vertical Frames: 1-1/2" X 3/4" x 1/8" hot roll structural channel, provided with holes for bolting to adjacent panel.
3. Horizontal Frames: 1-1/2" x 3/4" x 1/8" hot roll structural channel.
4. Stiffeners: 1" X 1/2" x 1/8" hot roll structural channel.
5. Top Capping Bar: Hot roll structural 3" channel.
6. Flat Bar Stiffeners: 5/16" x 2-1/2" flat bar full height of panel to prevent telescoping of channel frames and stiffen runs. Each with 2-1/2" x 7" x 5/16" base plate and (2) 3/8" x 2-3/4" anchors.
7. Corner Posts: 1-1/2" x 1-1/2" x 1/8" structural angle.
8. All hardware and anchors are furnished for a complete installation.



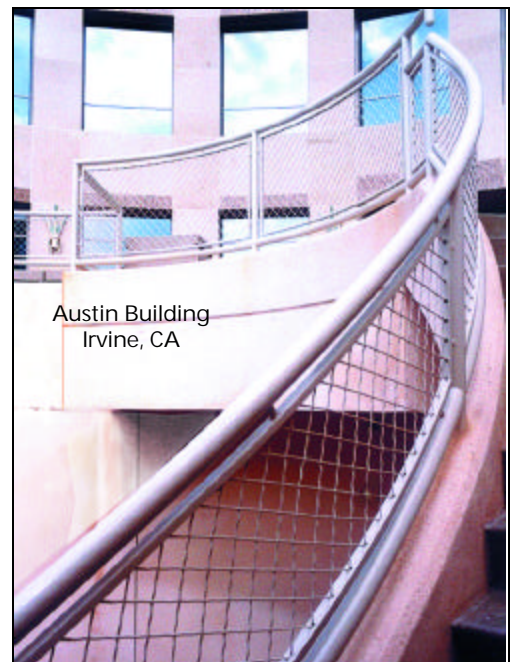
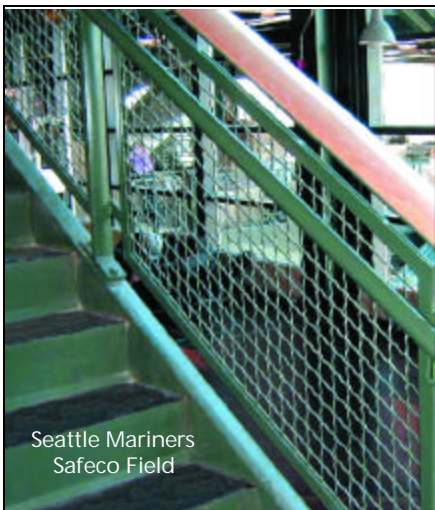


Selector Guide / Specifications

1. Wire: #10 W&M gauge steel wire welded into 2" square mesh, then welded to angle frames.
2. Vertical Frames: 1-1/4" x 1-1/4" x 1/8" hot rolled angle provided with holes for fastening to adjacent panels or tube posts.
3. Horizontal Frames: 1-1/4" x 1-1/4" x 1/8" hot rolled angle provided with holes for fastening to adjacent panels or tube posts.
4. Center Stiffeners: (1) 1/8" X 1" flat bar on front of panel with (1) 3/4" x 3/4" x 1/8" angle on back side of panel.
5. Line Posts (Floor Braces): 2" x 2" 14 gauge steel tubing.
6. Top Capping Bar: 2" x 1" 14 gauge steel tubing.
7. Corner Posts: 2" x 2" 14 gauge steel tubing.
8. All hardware and anchors are furnished for a complete installation.

SEE BACK PAGE FOR FINISHES, LOCKS, AND APPLICATIONS. CALL 1-888-564-WIRE FOR FREE QUOTE.

CAL WIRE CUSTOM Handrail Infill Panels



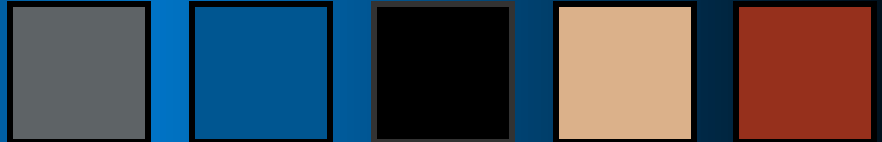
Cal Wire Products Can Be Indexed In The Following Sections

Partitions - wire mesh (sect. 10605)
Partitions - security (sect. 10605)
Partitions - portable (sect. 10605)
Partitions - relocatable (sect. 10605)
Partitions - sliding (sect. 10605)
Partitions - gypsum (sect. 13046)
Partitions - vinyl faced (sect. 13046)
Partitions - ceiling assembly (sect. 10615)
Computer systems - hardware - security (sect. 11030)
Doors - detention, security (sect. 08320)
Doors - sliding - woven wire (sect. 10605)
Doors - swinging - steel, woven wire
Fences - modular (sect. 02825)
Fences - wire (sect. 02825)
Gates - anti-terrorist, security (sect. 02825)
Gates - mezzanine safety (sect. 10605)
Gates - folding or sliding - wire mesh (sect. 10605)
Gates - swinging - wire mesh (sect. 02825)
Grilles or screens - metal, woven wire (sect. 10240)
Guards - window (sect. 10605)
Handrails - custom designed (sect. 10605)

Handrails - safety (sect. 10605)
Hardware - gate locks (sect. 02825)
Insert panels - custom designed (sect. 10605)
Insert panels - grille, steel (sect. 10605)
Lockers - police station (sect. 10500)
Lockers - wire mesh (sect. 10605)
Machinery / equipment - enclosures (sect. 10605)
Office - shelters, prefabricated (sect. 13046)
Office equipment - workstations - modular (sect. 10615)
Product info. - associations - woven wire (sect. 10605)
Prisons - equipment - lockers (sect. 11190)
Reinforcing - wire mesh (sect. 10240)
Screens - detention, protection, security (sect. 11190)
Shelters - guard (sect. 13046)
Shelters - modular (sect. 13046)
Shelters - office, relocatable, portable (sect. 13046)
Shelving - racks & shelving (sect. 10670)
Storage equipment - lockers, tenant (sect. 10605)
Structures - modular, pre-engineered (sect. 13046)
Vaults - security equipment (sect. 11020)
Wire mesh (sect. 10605)

Finish

HVLP applied shop coat of Machinery Gray enamel. Standard options include Black, Blue, Tan, and Primer. Hot dipped galvanized finish, powder coating, and special colors also available upon request.



Locks

Doors are equipped with mortise type cylinder locks operated from outside with a key, and from inside with a recess knob. Padlock hasps or custom keyed options are also available.



Custom Packaging

A-frames are available for extra protection during shipping.

Service

Cal Wire has an in-house engineering, installation, and customer service department. Phone, fax, or e-mail your requirements. **We specialize in unique custom design!**

Warranty

Cal Wire agrees to repair or replace any or all of our work that may prove to be defective in its workmanship or material within a period of one (1) year from the date of Substantial Completion, without any expense whatsoever to the Owner, ordinary wear and tear, unusual abuse or neglect excepted.

CALIFORNIA WIRE PRODUCTS CORPORATION

1128 West Bradford Circle · Corona, CA 92882
Ph. (888) 564-WIRE (9473) · (909) 371-7730 · Fax (909) 735-1070
E-mail: info@cawire.com · <http://www.cawire.com>